

## 'LABGAS+' - Intelligent Gas Generators

**'LABGAS+' , model NG64 is the latest Nitrogen PSA Laboratory Gas Generators from Noblegen Products.**

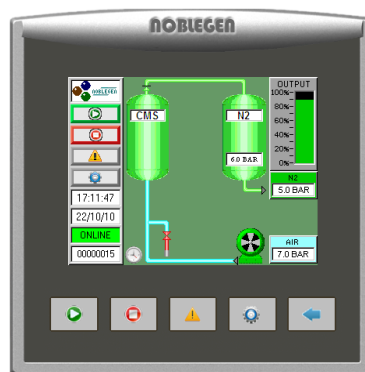
Utilising the reliable and efficient PSA technique of separating Nitrogen and Oxygen is used to produce LCMS quality nitrogen gas for your instrument.

The Generator is controlled using the latest in HMI touch screen technology to display the process in real-time, inlet / outlet pressures, Trend graphs and much more.....



### Features

- Internal oil-free air compressor or without compressor models
- Compact and Quiet design
- Auto-run facility (timer)
- Energy saving mode
- Outlet flow indicator (% flow)
- Trend graphs into MS excel
- Alarms with help menu
- Audible service alarm sounder



Colour HMI Touch Screen

### Applications

- LCMS
- Fume Cupboards
- Solvent Evaporation

LABGAS+ model NG64 Nitrogen Generator from Noblegen Products is your reliable and efficient alternative to conventional high pressure cylinder and liquid gas supplies. Taking away the on-going costs, safety considerations and transportation of traditional gas supplies, the 'LABGAS +' on-site Nitrogen systems are some of the most advanced and intelligent available. The control system gives the user all the information necessary to ensure an efficient and consistent supply of gas is always available. From the process to flow and alarms, including auto-start / stop function, Trend graphs, service alarm and service records page, there is simply no other laboratory nitrogen system quite like LABGAS +.

The NG64 is one of the most economical LCMS nitrogen generators on the market for both purchase price and on-going running / maintenance costs. Together with our unrivalled experience and knowledge of nitrogen gas generators with 1000's running world-wide supported by our national and international partners.

## Nitrogen Outlet Flowrate - NI/min vs Oxygen Concentration

Model	5ppm	100ppm	0.1%	0.5%	1.0%	2.0%	outlet pressure (psi g)	Dims -0	Dims -1
NG64	-	-	-	45	50	64	100.0	Size 1	Size 2

Specification based on 9barg (130psig) air inlet pressure @ 20°-25°C (68°-77°F) ambient air temperature. For inlet pressures and ambient air temperature outside these conditions please contact the Noblegen technical department.

## Specifications

Ambient Temp Range	5-40 °C (41-104 °F)
Certification	ISO9001:2008
Start-up time	<15 mins
Nitrogen Outlet Particles	<0.01 micron
Power supply	230v A.C. single phase 50Hz (1.5Kw)
Socket Inlet	IEC type C14 (fused) 6.3A max
Air Inlet Requirement (-0)	9 bar g (130 psig) – 154 LPM
Inlet / Outlet Connections	1/4" BSPP
Process Pipe-work	Copper Pipe

## Dimensions and Weights

Enclosure	Length	Width	Height	-0 Weight	-1 Weight
Size 1	600	600	1,300	125	-
Size 2	600	600	1,300	-	175

Note: Dimensions in mm, weights in kgs.

